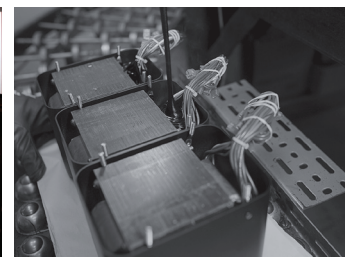


# C500 preamplifier

- C500 stereo preamplifier is a luxurious two box design where the power supply-control section is separate from the audio processing chassis. This produces the purest audio performance possible.
- The active audio section may be ordered as tube or transistor depending on preference.
- Stereo output level meters, powerful headphone amplifier, MM and MC phono sections and home theater passthru, are a few of the many C500 capabilities.



Unique design accomplishes superb performance.

**McIntosh®**

LEGENDARY PERFORMANCE™

[www.mcintoshlabs.com](http://www.mcintoshlabs.com)

# C500 preamplifier

## C500 Solid State Preamplifier Section

### Specs: Frequency Response

0, -0.5dB from 10Hz to 40,000Hz

### Total Harmonic Distortion

0.002% maximum from 20Hz to 20,000Hz

### Signal To Noise Ratio

High Level, 100dB

Phono, 88dB

### Maximum Voltage Output

12V RMS Unbalanced

(Spkr1 and Spkr2 Outputs)

25V RMS Balanced

(Main, Spkr1 and Spkr2 Outputs)

## C500 Tube Preamplifier Section Specs:

### Frequency Response

+0, -0.5dB from 10Hz to 20,000Hz

### Total Harmonic Distortion

0.05% maximum from 20Hz to 20,000Hz

### Signal To Noise Ratio

High Level, 93dB

Phono, 80dB

### Maximum Voltage Output

10V RMS Unbalanced

(Spkr1 and Spkr2 Outputs)

20V RMS Balanced

(Main, Spkr1 and Spkr2 Outputs)

### Overall Dimensions C500C:

Width is 17-1/2" (44.45cm)

Height is 6" (15.24cm) including feet

Depth is 24" (61.00cm) including the

Front Panel, Knobs and interconnect cables\*

### Overall Dimensions C500P:

Width is 17-1/2" (44.45cm)

Height is 6" (15.24cm) including feet

Depth is 23" (58.42cm) including the

Front Panel and interconnect cables\*

### Overall Dimensions C500T:

Width is 17-1/2" (44.45cm)

Height is 6" (15.24cm) including feet

Depth is 23" (58.42cm) including the

Front Panel and interconnect cables\*

### Weight C500C:

30.1 lbs. (17.7 kg) net

46.5 lbs. (27.9 kg) in shipping carton

### Weight C500P:

25.1 lbs. (15.0 kg) net

41.5 lbs. (24.3 kg) in shipping carton

### Weight C500T:

26.4 lbs. (15.4 kg) net

42.8 lbs. (24.8 kg) in shipping carton

\*The Custom Interconnect Cables are supplied with the C500 Preamplifier and C500 Tube Preamplifier. They are the ONLY cables to be used for connecting a C500 Controller to the C500 Preamplifier or C500 Tube Preamplifier.



### For the Consumer's Protection:

In order to ensure the highest level of customer satisfaction, "new" McIntosh products may only be purchased over-the-counter or delivered and installed by an Authorized McIntosh Dealer. McIntosh products that are purchased over the Internet, by phone or mail order are presumed to be "used" and do not qualify for any McIntosh Warranty. McIntosh does not warrant, in any way, products that are purchased from anyone who is not an Authorized Dealer or products that have had their serial number altered or defaced.



## Companion Products

The McIntosh MC1.2K Power Amplifier, MCD1100 SACD/CD Player, MT10 Turntable, MEN220 Room Correction System, MPC1500 Power Controller and the XRT1K Loudspeaker are logical companions for the C500 Preamplifier. Your Authorized Dealer can provide additional information.

To experience the legendary performance of McIntosh, please call on us at 1.800.538.6576.

# McIntosh®

LEGENDARY PERFORMANCE™

www.mcintoshlabs.com