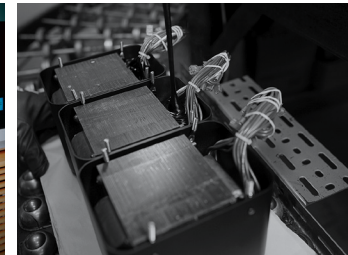


# MA12000 integrated amplifier

- The fully loaded, hybrid MA12000 Integrated Amplifier is a product of uncompromising audio engineering and expert craftsmanship.
- Our most powerful integrated amplifier ever, the feature rich MA12000 offers 350 Watts per channel of clean, high performance power that produces a breathtaking home audio experience.
- Gives the best of all worlds with the warm nuances of a vacuum tube preamplifier combined with the speed and raw power of a solid state amplifier, state-of-the-art digital audio capabilities, and enough analog audio connections for virtually any home music system.
- Autoformer™ technology guarantees your speakers will receive the full 350 Watts whether they have 2, 4 or 8 Ohm impedance.
- Comes with our advanced DA2 Digital Audio Module that supports high resolution digital music playback of up to DSD512 and 24-bit/192kHz.
- Filter capacity has been doubled compared to our other integrated amplifiers for even better low frequency performance.
- Includes numerous McIntosh technologies such as fast-responding "McIntosh Blue" Watt meters, Power Guard®, Sentry Monitor™, Monogrammed Heatsinks™, Home Theater PassThru, 8-band analog tone controls, High Drive headphone amplifier with Headphone Crossfeed Director (HXD®), Power Control, Solid Cinch™ speaker binding posts, the latest audio-grade circuit components, powerful control microprocessors, and a stainless steel chassis polished to a mirror finish.



The Integrated Amplifier of Your Dreams.

**McIntosh®**

LEGENDARY PERFORMANCE®

[www.mcintoshlabs.com](http://www.mcintoshlabs.com)

# MA12000 integrated amplifier

## Power Output:

350 Watts per channel

## Total Harmonic Distortion:

Preamplifier: 0.03%

Amplifier: 0.005%

Both maximum from 20Hz to 20kHz

## Tone Controls:

8-Band analog tone controls

## Headphone Amplifier:

1/4" High Drive with Headphone Crossfeed Director (HXD®). Powers all headphones from 20 to 600 Ohms.

## Analog Inputs:

6 Unbalanced

2 Balanced

1 Moving Coil (adjustable)

1 Moving Magnet (adjustable)

## Digital Inputs:

2 Coax

2 Optical

1 USB

1 MCT (used with McIntosh SACD/CD Transports)

1 HDMI (ARC)

All digital inputs are housed in DA2 Digital Audio Module.

## Home Theater PasThru:

Allows for seamless interfacing with a Home Theater system.

## Overall Dimensions (W x H x D):

17-1/2" (44.5cm) x 9-7/16" (24cm) x 22" (55.88cm) including knobs, connectors and cables

## Weight:

108 lbs (48.9kg) net,

141 lbs (63.9kg) in shipping carton

## For the Consumer's Protection:

In order to ensure the highest level of customer satisfaction, new McIntosh products may only be purchased from an Authorized McIntosh Dealer; and, with certain limited exceptions may only be purchased over-the-counter or delivered and installed by the Authorized McIntosh Dealer. McIntosh does not warrant, in any way, products that are purchased from anyone who is not an Authorized McIntosh Dealer, or that have had their serial numbers altered or defaced.



## Companion Products

The MT10 Precision Turntable, MCD600 SACD/CD Player or MCT500 SACD/CD Transport, MS500 Music Streamer, MR87 AM/FM Tuner, MEN220 Room Correction System, MPC1500 Power Controller, and XRT1.1K Loudspeakers are logical companions for the MA12000 Integrated Amplifier. Your Authorized Dealer can provide additional information on other McIntosh product combinations. To learn more, please call us at 1.800.538.6576.

# McIntosh®

LEGENDARY PERFORMANCE®

www.mcintoshlabs.com