

### Installing the Wi-Fi Antenna

To install the Wi-Fi antenna, screw the antenna clockwise onto the antenna base located on the left side (looking at the back) of the rear of the MTI100 (Figure 8 on page 3).

### Installing the Platter

Near the center of the top of the MTI100, you will find a spindle post that can receive a ball bearing\*.

Before installing the platter, place a small amount of lubricant\* on top of the spindle<sup>1</sup>, place a small amount of lubricant onto the sides of the entire spindle shaft<sup>2</sup>, place the ball bearing<sup>3</sup> onto the center of the foam holder<sup>4</sup> on the spindle, then install the brass fitting located in the center of the bottom of the platter over the spindle.

Carefully, and evenly lower and seat the platter.

To remove the platter, pull the platter upward and away from the MTI100. Retain the ball bearing for next use. The Record Mat is placed on the Platter as you would a record (centered on the Spindle).

*\*bearing and lubricant are supplied in your Manual Pack.*

### Already Installed

The MTI100 comes equipped with a Sumiko Olympia Phono Cartridge which has already been expertly installed and set up. Anti-skate and the Counterweight have been factory set.

The Anti-skate cable needs to be released and placed in the holder. Full instructions are included for possible future reference.

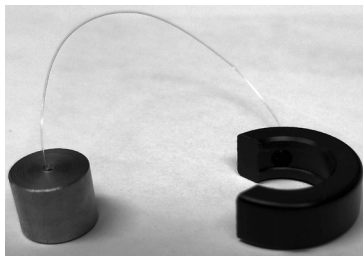
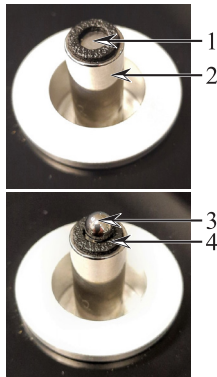


Figure 04- Anti-Skate Parts



### Installing Anti-Skate

The Anti-skate Mechanism has been factory installed, and the cable simply needs to be unsecured from its packing and hooked on the holder. Full instructions are included anyway. Skip to the last step in bold below.

The Anti-skate Assembly consists of a black U-shaped anchor connected to a small silver weight by a clear cable (see Figure 4). There is a pre-installed metal cable holder attached to the Tonearm Base.

To install the Anti-skate feature:

- Remove the Counterweight. (See Installing Counterweight below.)
- Slide the black U-shaped end of the Anti-skate Assembly over the rear of the Tone Arm with the Allen Wrench Screw accessible (on the right side of the Tonearm). Leave approximately a 1/4-inch (0.635 cm) between the Tonearm Pivot and the Black U-shaped end. Leaving slightly more space will make no difference in performance. Just make sure there is some space.
- **Slip the clear plastic cable into the gap at the end of the Anti-Skate cable holder. The weight will hang down.** (Figure 11 on page 6.)

This setup is designed for this tone arm and cartridge. No further adjustment is needed.

### Phono Cartridge Wires

The wire connections between the tonearm and cartridge are color coded. There are colored rings at the base of the pins on the rear of the cartridge. These are connected to the corresponding colored wires from the tonearm. The four wires terminate in connectors which are slid over small brass

pins. Please use care and an appropriate tool for connecting or disconnecting these wires. Since the Sumiko Olympia Cartridge is already installed, there is no immediate need to touch these wires unless a new cartridge is being installed.

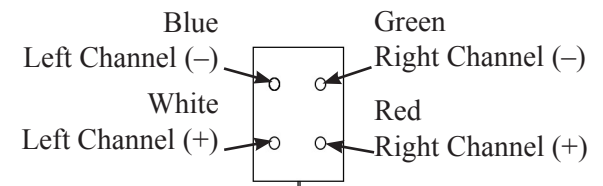


Figure 05- Rear View Cartridge Pins

### Installing the Counterweight

The Counterweight has been installed and calibrated at the factory. To make any adjustments, you should have a good quality Stylus Tracking Force Pressure Scale Gauge.

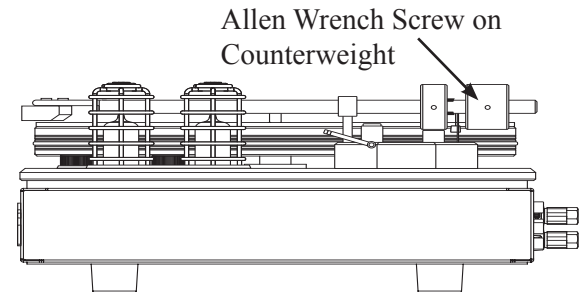


Figure 06- Counterweight Adjustment

To move/remove or install the Counterweight:

- Make sure the Allen Wrench Screw is loosened (see Figure 6). You can loosen the Allen Wrench Screw using the included Medium Allen Wrench- turn the screw counter-clockwise to loosen.
- Position the Counterweight so the Tonearm floats in a position between down and up.